

CASEY COUNTY AG NEWS

AUGUST 2024

Cooperative Extension Service

I will be on leave from August 9th until August 27th. I will answer emails as I can periodically but if you need something urgently please call the office.



Kelsey Marcum

Casey County Agriculture & Natural Resources Agent

CASEY COUNTY COOPERATIVE EXTENSION SERVICE



1517 S Wallace Wilkinson
Blvd Liberty, KY 42539



606-787-7384



casey.ca.uky.edu

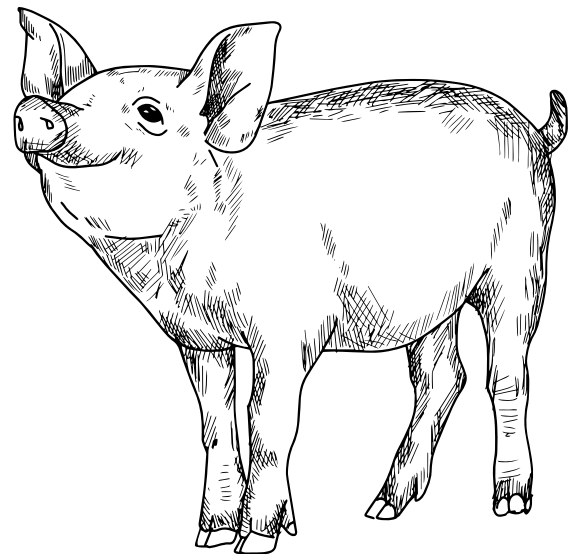


facebook.com/caseyanr

August Herbicide Weed Control

Aster	Horsenettle
Chicory	Tall Ironweed
White Clover	Milkweed
Hemp Dogbane	Tickclover
Goldenrod	Trumpetcreeper

Refer to AGR-207 for herbicide recommendations
or call us for more information.



Cooperative Extension Service

Agriculture and Natural Resources
Family and Consumer Sciences
4-H Youth Development
Community and Economic Development

MARTIN-GATTON COLLEGE OF AGRICULTURE, FOOD AND ENVIRONMENT

Educational programs of Kentucky Cooperative Extension serve all people regardless of economic or social status and will not discriminate on the basis of race, color, ethnic origin, national origin, creed, religion, political belief, sex, sexual orientation, gender identity, gender expression, pregnancy, marital status, genetic information, age, veteran status, physical or mental disability or reprisal or retaliation for prior civil rights activity. Reasonable accommodation of disability may be available with prior notice. Program information may be made available in languages other than English. University of Kentucky, Kentucky State University, U.S. Department of Agriculture, and Kentucky Counties, Cooperating. Lexington, KY 40506



Disabilities
accommodated
with prior notification.

RAISED BED GARDENING SERIES

This series will cover a variety of topics including: building your own bed, square foot gardening, starting seeds, transplanting, soil health, companion planting, and more. Participants may choose to attend any or all sessions. All sessions will be at 6:00pm at the Casey County Extension office.

Dates:

March 26th April 16th
May 21st June 25th
July 23rd **August 27th**



Call 606-787-7384 to register.

Cooperative
Extension Service

Agriculture and Natural Resources
Family and Consumer Sciences
4-H Youth Development
Community and Economic Development

MARTIN-GATTON COLLEGE OF AGRICULTURE, FOOD AND ENVIRONMENT

Educational programs of Kentucky Cooperative Extension serve all people regardless of economic or social status and will not discriminate on the basis of race, color, ethnic origin, national origin, creed, religion, political belief, sex, sexual orientation, gender identity, gender expression, pregnancy, marital status, genetic information, age, veteran status, physical or mental disability or reprisal or retaliation for prior civil rights activity. Reasonable accommodation of disability may be available with prior notice. Program information may be made available in languages other than English.
University of Kentucky, Kentucky State University, U.S. Department of Agriculture, and Kentucky Counties, Cooperating.
Lexington, KY 40506



Disabilities
accommodated
with prior notification.

CASEY COUNTY FARMERS MARKET

Every Thursday, 4:30 - 7:00pm

May through September

NEW LOCATION:

289 S. Wallace Wilkinson Blvd

(The Old Don Franklin parking lot, new home of Casey County Food Pantry).

Growing On-feed Inventory, Lower Placements, and No Sign of Heifer Retention

Dr. Kenny Burdine

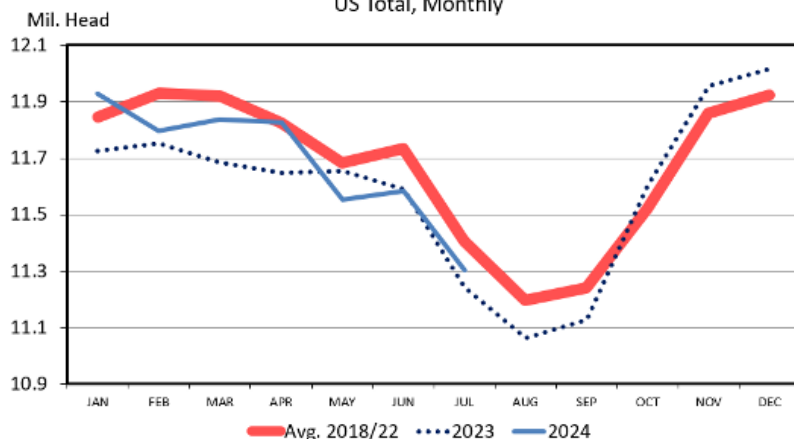
USDA's July Cattle on Feed report was released on Friday July 19th. These monthly reports estimate inventory in US feedlots with one-time capacity exceeding 1,000 head, which represent more than 80% of total on-feed inventory in the United States. The July report is also a quarterly report that includes data on the steer-heifer mix in feedlots. This brief article will walk through last week's report and some of the implications of it.

Total on-feed inventory declined during the month of June with July 1 inventory estimated at just over 11.2 million head. This trend is normal as on-feed numbers tend to decline seasonally from winter to late summer. Compared to 2023, July 2024 inventory was actually about 0.5% higher. On the surface this seems odd given the recent declines in the size of calf crops, but I maintain that cheap feed and higher slaughter weights are largely the reason for this as cattle are being fed longer.

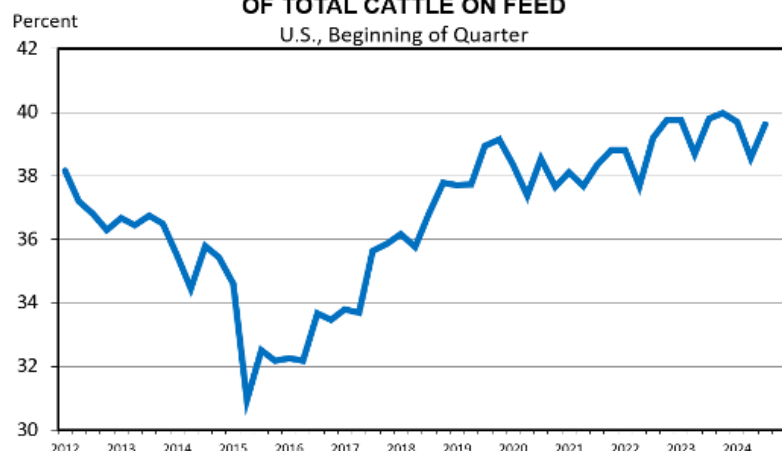
Feedlot placements have been the most interesting number to watch in recent months. For the month of June, placements were down almost 7% from last year. This contrasts with placements being 4% higher year-over-year for the month of May. These last two months illustrate why it is sometimes hard to look at things purely on a monthly basis. If I instead calculate feedlot placements for the first 6 months of 2024, as compared to the first 6 months of 2023, total placements have been down by 3.2%. This likely tells the feeder cattle supply story a bit better.

Since USDA will not be publishing a July Cattle Inventory report this year, the July steer-heifer mix on feed is especially important as it provides some perspective on heifer retention. Heifers accounted for 39.6% of on-feed inventory in July, which was actually higher than the previous estimate from April. If retention were occurring, one would expect the heifer percentage to be in the low-mid 30% range, so this continues to suggest that expansion is not on the near horizon.

CATTLE ON FEED
US Total, Monthly



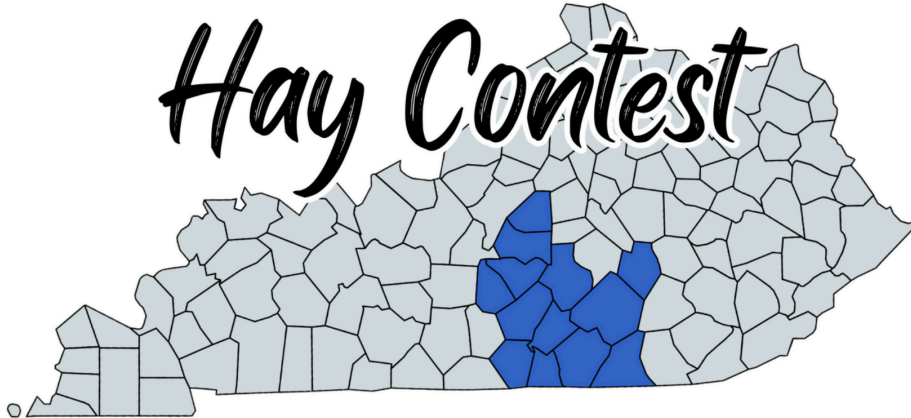
HEIFERS ON FEED AS A PERCENT OF TOTAL CATTLE ON FEED
U.S., Beginning of Quarter





SOUTH-CENTRAL KY

Hay Contest



The South-Central KY Area Hay Contest is offered to all individuals raising hay in Adair, Casey, Clinton, Cumberland, Green, Marion, McCreary, Pulaski, Rockcastle, Russell, Taylor, Washington, and Wayne counties.

This program aims to provide producers with free hay analysis results to aid in educating producers on raising higher quality forages and meeting livestock needs.

Producers may submit multiple samples in each contest area to their county agriculture agent. Samples must be submitted no later than September 30th, 2024. Basic analysis results will be sent to producers by November 1st, 2024. Results will include crude protein, DM, TDN, RFV, ADF, and NDF. Producers may be provided with livestock ration recommendations in addition to their results upon request.

After completion of the program, an area-wide event will be held to provide an educational overview of the program and present awards to contest winners. There will be one winner selected for the entire area for each hay class. Please reach out to your county agriculture agent for further information.